

The GPS Smart Shoe by GTX Corp



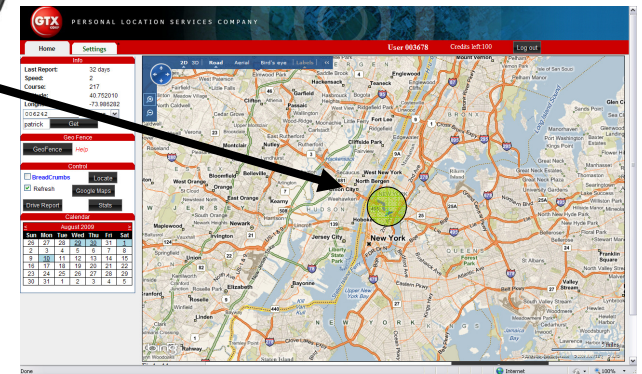
GTX Corp

The Personal Location Services (PLS) company

- Develops, patents, and integrates miniaturized GPS tracking and cellular location-transmitting technologies into consumer products and business-to-business applications
- 18 patents issued and pending
- A complete solution for a quick commercial launch:
 - Tracking portal- Real time tracking and viewing of people and assets
 - Support multiple devices*
 - Connectivity (US only)
 - Support in English and Spanish



GTX Tracking Portal



***Personal tracking devices and iPhone apps**



Contact us for more information:

117 W. 9th Street #1214 • Los Angeles, CA. • USA 90015 • Tel:+1-213-489-3019 • info@gtxcorp.com
www.gtxcorp.com